



## Great Alaska Council Top Stories

### Be Prepared ... For Summer Camp!



#### **Camp T-Shirt Order is Live!**

Go to camp in style with your t-shirt! Scout leaders, volunteering parents, and youth are encouraged to purchase a 2019 camp t-shirt to wear while doing activities! Get yours today!

[Click Here to Purchase your T-Shirt](#)

#### Camp Guides Available Now!

Camp Guides are packed full of helpful information to prepare you and your Scout for camp! These guides are for parents and leaders! Click below on the camp you are going to attend.

[Camp Gorsuch - Cub Scout](#)

[Camp Gorsuch - Scouts BSA](#)

[Eagle River Scout Camp](#)

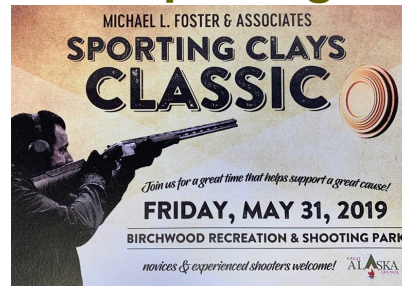
[Denali High Adventure Scout Base](#)



**100% Camp Payments Due  
April 30, 2019**

## Shoot for Scouting with the 2019 Sporting Clays Classic!

Grab your shotgun and friends and join us for Sporting Clays! Support Scouting while you enjoy time out on the range, eat delicious BBQ, and test your aim!



**Date:** Friday, May 31, 2019

**Location:** Birchwood Recreation and Shooting Park

**Check-In:** 11:00 AM, Shoot starts at 12:00 PM with late lunch and beverages to follow

[Click Here to register today!](#)

## Celebrate Scouting at Your District Dinner

### Bear Paw District Dinner

**Date:** Thursday, May 9

**Location:** Good Shepard Lutheran Church

**6:30 PM**

[Register Here](#)



Thank you!



## 2019 Popcorn Sign-Up is Live

The Scouting program is powered by popcorn! Unit popcorn kernels sign up online today! Get updates, information

and more by signing up early! There are exciting things happening for this upcoming sale!

[Click Here to Register You Unit](#)

# Cub Scouts

## Cubcast: Scouts with Special Needs

Special needs can mean anything from a learning disability like dyslexia to hearing loss to a physical disability like cerebral palsy. Even if you don't have any special needs youth in your den or pack, you're sure to find this discussion with Warren Weener, the chair-elect of the National Disabilities Awareness Committee, very enlightening.



[Click Here to Listen](#)

---



## Be Prepared... for Summer Camp with Medical Forms!

Attending camp? Youth and adult campers will need to have the BSA Medical form completed. Plan ahead

and get your physical and forms completed early and turned into your Pack Camp Coordinator or Leader!

[Click Here to Download the Form](#)

---

## Pack Planning Resources

Boys Life releases planning calendars and resources. Below you will find the 2018-2019 planning guide. Spring is the time Packs should be planning for the coming Scouting year. Planning your year helps to build your Pack budget. From there, you create your fundraising plan - allowing each Scout to earn their way through Scouting, even to camp! Popcorn sale dates are coming soon!

[Click Here for Boys Life Resources](#)

# Boys' Life



## 2018-2019 LEADER PROGRAM NOTEBOOK

BOY SCOUTS OF AMERICA

CUB SCOUTS

---

## Scouts BSA and Venturing

---



### Scoutcast: Scouts with Special Needs

Last December there was a post on the Bryan on Scouting blog about Benjamin Waggoner, a Scout who has spina bifida and is Eagle Scout No. 527 in Troop 890 in Dallas, Texas. So, we invited Benjamin and his dad, Chip Waggoner, to chat with us about Scouts with special needs from the perspectives of a Scout and a parent.

[Listen Now!](#)

---

### Southcentral Spring Camporee: Learn to Return

This camporee is being run with the assistance of Learn to Return. LTR is Alaska's premier and longest running full spectrum survival school.

They maintain a comprehensive and diverse safety and survival



training program. Enclosed you will find a schedule and event descriptions. Please read the event descriptions in order to prepare your Unit. If you have any questions concerning the Camporee contact a member of the Camporee Planning committee.

Date: May 3-5, 2019

Location: Camp Gorsuch

Fee is \$10 per Scout. \$3 for adults.

Scouts registering after April 25, will be charged \$15.

[Click Here to Register](#)

---

## Order of the Arrow News

---



# ORDEAL

## Gorsuch Induction Weekend 2019

**When:** May 17-19, 2019

**Where:** Camp Gorusch

**Candidates:** All candidates should arrive between 7:30pm-8pm. It is highly advised that you do not arrive any earlier than this. The weekend will end at 11am on Sunday Morning. During Breakfast you will be presented with your lodge insignia. We encourage your parents to come and join us for this recognition breakfast. You can register them when you register yourself.

You should bring Medical Form (A&B) Full Uniform (Merit Badge Sash and Medals should stay home) you will NOT need your uniform until Saturday Afternoon, please come in clothes you do not mind getting dirty (Work Clothes and gloves). A sleeping bag, pad, tarp and tent, flashlight, water bottle, knife and personal toiletries.

**Arrowmen:** We ask that you arrive between 6pm-7pm, Those serving as Elangomats should arrive no later than 7pm. Please bring Medical Form (A&B) work clothes, gloves, full uniform, tent, tarp and personal toiletries. Cabins will NOT be available.

[Click Here for More Information](#)

---

# District Information

---

## Bear Paw District

The Bear Paw District covers the communities of Palmer, Wasilla, Valdez, Big Lake, Willow, Talkeetna, and Glennallen.

[Click Here](#) to visit the Bear Paw District Page

Questions?

**Gordon Ward, District Commissioner**

Email: [gord@mtaonline.net](mailto:gord@mtaonline.net)

**Russ Ingram, District Chair**

Email: [ingramwr@gmail.com](mailto:ingramwr@gmail.com)

**Danyelle Schauer, Sr. District Executive**

Email: [danyelle.schauer@lflmail.org](mailto:danyelle.schauer@lflmail.org)

Cell: 907-952-4647

---

## Denali District

The Denali District covers the communities of Anchorage (South of Tudor, West of Gambell), Girdwood, Indian.

[Click Here](#) to visit the Denali District Page

Questions?

**Paul Ritz, District Chair**

Email: [paul\\_ritz@yahoo.com](mailto:paul_ritz@yahoo.com)

**Brad Lewis, Sr. District Executive**

Email: [brad.lewis@scouting.org](mailto:brad.lewis@scouting.org)

Cell: 717-405-2336

---

## Eklutna District

The Eklutna District covers the communities of Anchorage (North of Tudor, East of Gambell), Eagle River, Birchwood, Peter's Creek, Chugiak, and Joint Base Elmendorf-Richardson.



[Click Here](#) to visit the Eklutna District Page

Questions?

**Scott Wesierski, District Chair**

Email: [scott.a.wesierski.civ@mail.mil](mailto:scott.a.wesierski.civ@mail.mil)

**John Woyte, District Commissioner**

Email: [john.woyte@gmail.com](mailto:john.woyte@gmail.com)

**Samuel Giacalone, District Executive**

Email: [samuel.giacalone@scouting.org](mailto:samuel.giacalone@scouting.org)

Cell: 907-223-5111

---

## Maritime District

The Maritime District covers the communities of Haines, Skagway, Sitka, Gustavus, and the greater Juneau area.

[Click Here](#) to visit the Maritime District Page

Questions?

**Chris Gianotti, District Chair**

Email: [cgianotti@pndengineers.com](mailto:cgianotti@pndengineers.com)

**Fred Thorsteinson, District Commissioner**

Email: [fredthorsteinson@gci.net](mailto:fredthorsteinson@gci.net)

**Samuel Giacalone, District Executive**

Email: [samuel.giacalone@scouting.org](mailto:samuel.giacalone@scouting.org)

Cell: 907-223-5111

---

## Totem District

The Totem District covers the communities of Ketchikan, Prince of Wales, Wrangell, and Petersburg.

[Click Here](#) to visit the Totem District Page

Questions?

**Dennis Olsen, District Commissioner**

Email: [doko@kpunet.net](mailto:doko@kpunet.net)

**Bryce McCandless, Program Director**

Email: [bryce.mccandless@scouting.org](mailto:bryce.mccandless@scouting.org)

---

## Tustumena District

The Tustumena District covers the Kenai Peninsula, in addition to the rural communities Alaska including Kodiak and Cordova.

[Click Here](#) to visit the Tustumena District Page

Questions?

**Russell Gross, District Chair**

Email: [rgross144@ameritech.net](mailto:rgross144@ameritech.net)

**Brad Lewis, Sr. District Executive**

Email: [brad.lewis@scouting.org](mailto:brad.lewis@scouting.org)

Cell: 717-405-2336

---

## Scouting's Community Partners



[Alaska USA Foundation](#)

Supports Traveling Day Camp to rural areas of Alaska.

[Richard L and Diane M Block Foundation](#) for their support of the ScoutReach program.

[Wells Fargo](#) supports the Learning for Life and Exploring Program

Thank you to the following companies for helping transport popcorn to Alaska and our local communities:

- [TOTE Maritime](#)
- [Lynden Transport](#)
- [Alaska Marine Lines](#)

[Alaska Commercial Company](#) Helping to bring Traveling Day Camp to rural communities across Alaska

[BP Alaska](#) Contributing to the pilot STEM Scout program.

[NRA Foundation](#): Cowboy Action shooting program supporter.



Thank you for your support!

---



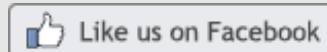
## Support Scouting

100% of the funds raised in Alaska - stay in Alaska. Help Scouting build the future leaders and community members of Alaska with your donation.

[Donate Now](#)

Great Alaska Council | 907-337-9547 | [alaskabsa@scouting.org](mailto:alaskabsa@scouting.org) | [scoutingalaska.org](http://scoutingalaska.org)

### STAY CONNECTED:



Follow us on **twitter**